

News Flashes

Celebrating



**Harrison County
Rural Electric Cooperative**

Your Touchstone Energy® Partner 

75 Years
1936 - 2011

APRIL 2011



2010 Scholarship Winner Announced

Hannah Wilkerson, a Logan-Magnolia High School senior, is the winner of the 2011 Basin Electric Power Cooperative Scholarship. The \$1,000 scholarship was awarded to Hannah based on her outstanding academics and ACT scores along with her excellent essay on local cooperatives and how these cooperatives contribute to local communities. She is involved in school activities including finalist in "Know Your Constitution" Iowa Bar Association

competition. She is a very active 4-H member serving as treasurer and as part of the County 4-H Council. Hannah was an Iowa State Fair finalist in baking, photography, extemporaneous speaking and working demonstrations. Hannah is a member and volunteer of the Woodbine Saddle Club, has a Black Belt in Tae Kwon Do, and is an archery and hunting club member.

This busy high school senior finds time for a part-time job and is a member of the Logan Christian Church where she helps with Vacation Bible School, and she helped build the church building. At the nursing home Hannah made decorations and gifts and participated in Christmas caroling. Hannah helped with fund raisers for 4-H, her church, Harrison County Fair, and Woodbine Saddle Club.

This fall Hannah will be attending classes at South Dakota University in Brookings. She plans to major in Biology and pursue a minor degree in Agronomy. Hannah is planning to work on campus to help pay college expenses and plans to join the South Dakota State University Tae Kwon Do Club. Hannah will pursue a career in wildlife management and conservation. She said her ultimate goal is to work for the national Park Service at one of our nation's federal wildlife preserves.

Hannah's proud parents are Harrison County REC members Gary and Rebecca Wilkerson from Mondamin. We wish Hannah the best as she pursues her education.

We would also like to thank all the excellent applicants for this year's scholarship. We wish you the best of luck in your future endeavors.

Local Cooperative member wins Editor's Choice Contest

Harrison County Rural Electric Cooperative presented a beautiful book entitled, *IOWA – Spaces, Places, Faces* by Carson Ode to member Jami Sherer of Woodbine. Jami's name was randomly chosen as the winner for the January 2011 issue of Living with Energy in Iowa magazine contest.

Please note that the purpose of this contest is to encourage members to visit the Living with Energy in Iowa web site (www.livingwithenergyiniowa.com) and that they cannot accept entries by any other means. In addition, you can enter each contest only once, there is no obligation associated with entering this contest and we do not share contestants' names or entry information with anyone.



Outstanding Patronage being applied on April 2011 electric bills

If you have not cashed your patronage capital retirement check dated 12/14/10, they are no longer eligible to be cashed. If you have an uncashed patronage check, we will be crediting your April 2011 electric bill. The amount of credit will appear on a separate line titled "CAPITAL CREDIT APPLIED."

If you have specifically requested a check, we will be sending those as well.

May is National Electrical Safety Month. Think Safety First Always!

Inside this issue:

Home Safety	2
Appliance Rebates	2
Operations Report	3
Patronage	3
Pay by Bank Draft	4
Energy Trail Tour	4

HOME SAFETY CHECKLIST –

Protect your family from fire and other electrical hazards by using this short checklist. These simple and easy steps will aid you in identifying and correcting electrical dangers commonly found in homes.

Basics:

1. Check the wattage of all bulbs in your lights –

Are the bulbs the appropriate wattage for the size of the fixtures? A bulb of too-high wattage may lead to fire through overheating.

2. Check all lamp cords and extension cords –

Are cords placed out of the walking areas and free of furniture resting on them? Tripping hazards may result. Also, stepping on cords or placing furniture on them can cause damage and create a fire hazard.

Are cords in good condition (not damaged or cracked)? Shock or fire hazards can result from damaged cords. Do not attempt

to repair cords yourself. Take any item with a damaged power cord to an authorized repair center, or safely dispose of the item and purchase a new one.

Are cords unwrapped? Tightly wrapped cords can lead to overheating.

Are all extension cords being used only on a temporary basis? Extension cords are not as safe as permanent house wiring. Have receptacles installed where they are needed.

3. Check all wall outlets and switches –

Are all outlets and switches working properly? Improperly operating outlets or switches indicate that an unsafe wiring condition may exist.

Are all outlets and switches cool to the touch? Unusually warm outlets or switches may indicate an unsafe wiring condition exists.

Do you hear crackling, sizzling, or buzzing from your outlets? Call a licensed electrician to identify the problem.

Are all outlet and switch cover plates in good condition? Replace any missing, cracked, or broken cover plates.

4. Check for Tamper Resistant Outlets –

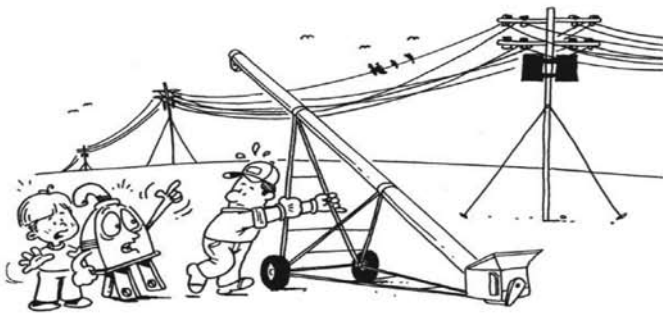
5. Check Portable heaters –

Are they properly placed away from items that may catch fire (i.e. drapes, newspapers, etc.)? Keep all flammable items at least three feet away. Pets may also be a danger with portable heaters, causing them to be tipped over to start a fire.

6. Check for presence and proper placement of smoke alarms and test them –

Smoke alarms should be located on every level of the home, in each bedroom, and outside sleeping areas.

GET THE WORD OUT ABOUT ELECTRICAL SAFETY



- Look up, look down and look out!
- Be careful of overhead and buried power lines and residential electrical equipment.
- Farmers – Be conscious of what's overhead – power lines to be specific. Make certain your equipment can pass safely underneath, including any new machinery you have purchased.



Harrison County
Rural Electric Cooperative
Your Touchstone Energy® Partner

Iowa's electric cooperatives want you to have a safe and productive spring!



Your local co-op puts safety first!

Energy Star Appliance Rebates

Putting new appliances in your home can pay off in many ways.

The new appliances generally have more capabilities than the older models they replace, but you'll also find that new Energy Star®-rated appliances use less electricity than your older appliances.

In addition, Harrison County Rural Electric Cooperative will pay you a rebate when you replace your old appliances with Energy Star® models. The rebates are \$50.00 for clothes washers and \$25.00 each for refrigerators, freezers, and dishwashers. The maximum rebate per cooperative member account is \$250.00.

Look for the Energy Star® label when you are appliance shopping and remember to call your cooperative office at 647-2727 or 800-822-5591 to apply for your appliance rebate.





Operations Department Report

By David Stevens, Director of Operations

Harrison County Rural Electric Cooperative (REC) has qualified for funding to rebuild 330 miles of overhead distribution power line. Storm damage assessment done by the cooperative linemen has met all criteria set by FEMA/Homeland Security and Emergency Management Department. An additional 26 miles of overhead line will also be rebuilt in areas damages occurred to the system, which did not meet the criteria for funding.

Harrison County REC qualified for FEMA 404 mitigation program allowing nine miles of main three-phase feeders to be rebuilt outside the damaged areas, but need attention.

The total construction project will consist of 366 miles completely rebuilt in parts of five counties. This is approximately 43% of the total overhead system. Most of the new line constructed will replace 60-70 year old line. Larger diameter poles and heavier conductor will be used

along with shorter spanning. Poles will be placed approximately 200 feet apart where old line spanning is 350 feet. Construction will be grade B+ instead of grade C to withstand heavy ice load and strong winds. Our system will be much more reliable and handle greater electrical loads due to increased conductor capacity.

Tree contractors will be used to clear the line path for construction. Tree contractors should begin in April 2011. Line construction contractors will begin constructing new line in May 2011. Consulting engineers will be surveying, designing, and staking new lines. Harrison County REC must oversee and manage the project to be completed in 48 months.

The first contract will consist of 80 miles of construction. Townships involved in the first contract are Boyer, Jefferson, Douglas, Cass, Magnolia, Allen, and Lincoln of Harrison County and Cass Township of Shelby County. Tree and line construction contractors will be seen in these areas beginning this spring.

Your cooperative line crews will be busy burying cable replacing overhead power lines that must be removed for a road grade along L-16 North of Woodbine. New underground power cable will be buried 3.74 miles along new road grade. Crews will also continue their normal work of new services, service improvement, and spring storms.

Questions or concerns regarding new construction activities should be made to the Operations Department of Harrison County REC.

REC WILL PAY PATRONAGE ON ESTATES

Patronage will be paid to estates on a discounted basis in June 2011. If you are interested in taking a discounted settlement on the patronage of a deceased member, please complete the form below and return it to the Cooperative office by Friday, May 6th. We will send you a form to sign to confirm the amount of patronage.

Request for Patronage to Estates

_____	_____	
Name of deceased	Deceased's spouse	
_____	_____	
Address (when Co-op member)	Name of executor or contact	
_____	_____	
City, State, Zip	Contact's Street Address	
_____	_____	
Date of Death	Memb #	Contact's City, State, Zip

Return to Harrison County Rural Electric Cooperative, P.O. Box 2, Woodbine, IA 51579 by **May 6, 2011**.

Peanut Butter Pancakes

- 1 c. pancake mix
- 2 tablespoons sugar
- 1 egg
- 1/3 c. peanut butter
- 1 (5 oz.) can evaporated milk
- 1/3 c. water

HONEY BUTTER:

- 1/4 c. butter softened (no substitutes)
- 2 tbsp. honey

In a large bowl combine pancake mix and sugar. In a small bowl, beat egg and peanut butter; add milk and water; Stir into dry ingredients until moistened. Pour batter by 1/4 cup onto lightly greased medium-hot griddle. Turn when bubbles form on top of pancakes and cook until second side is golden brown. Combine butter and honey in a small bowl and serve with pancakes.



Swap Column

FOR SALE – Five year old Shetland pony with saddle; \$200 or best offer; Leave message at 712-647-2548

FOR SALE – Celebrity three-wheeled mobility scooter; Call 712-647-2172



Energy Efficiency

Tip of the Month

Ninety percent of the energy it takes to wash clothes is used to heat water. If you wash in cold water, you could save \$40 per year if you have an electric water heater.

Source: U.S. Department of Energy

Pay by Bank Draft

Harrison County Rural Electric Cooperative offers a program to have your electric bill automatically deducted from your bank account on the 26th day of each month. Complete the following authorization and return it with your VOIDED check. The process will begin in approximately one month. When you receive your monthly bill the words BANK DRAFT will appear beside the total amount due.

AUTHORIZATION AGREEMENT FOR DIRECT PAYMENTS

I (we) hereby authorize Harrison County Rural Electric Cooperative, hereinafter called Company, to initiate debit entries to my (our) account indicated below at the depository financial institution named below, hereinafter, called Depository, and to debit the same to such account.

Bank Name: _____

Branch: _____

Address: _____

City: _____ State: _____ Zip: _____

Bank Routing Number: _____

Account Number: _____

Check one please:

Checking Account _____

Savings Account _____

This authorization is to remain in full force and effect until the Company has received written notification from me of its termination in such manner as to afford Company and Depository a reasonable opportunity to act on it.

Please Print:

Name: _____

Company Name: _____

Address: _____

City: _____ State: _____ Zip: _____

Signed: _____

Date: _____

Return completed form with your current bill or mail to: Harrison County Rural Electric Cooperative; P. O. Box 2; Woodbine, IA 51579-0002

News Flashes

Published monthly by

Harrison County Rural Electric Cooperative
61 Fourth Street
PO Box 2
Woodbine, Iowa 51579

Phone: 712-647-2727
800-822-5591

Fax: 712-647-2906
harrisoninfo@hrec.coop
www.hrec.coop

OFFICE HOURS
7:30 a.m. - 4:00 p.m.
Monday through Friday

Joe Farley, Manager/EVP
Jackie Androy, Editor

Directors

John Burbridge
Tim Sproul
Dave Dickinson
Marvin Klein
Jim Rains
Ernie Stueve
Curt Mether
Jim Sharp
Norlyn Taylor

3 GREAT DAYS OF EDUCATION AND FUN can be yours on the Energy Trail Tour, sponsored by Harrison County REC and NIPCO. Learn how water and coal are used to make electricity. See mining area returned to productive land. Enjoy the fellowship of other cooperative member-owners in a comfortable motor coach. Lodging, meals and entry fees are included. Nine lucky couples from Harrison County REC will be selected at random from those who sign up. You might be one of them, so sign up today!

Your cost: just \$50 per couple!

Energy Trail Tour

YES, please enter our names in the drawing for the trip. We understand that if our names are drawn, we will be billed \$50.

Our first and second choice of dates:

July 13-15 1st 2nd
July 27-29 1st 2nd (please circle)
Aug. 10-14 1st 2nd

I/we have have not participated in this tour in the past.

Name _____

Spouse's Name _____

Address _____

City _____

Phone _____

Clip coupon and return to REC office by May 6, 2011