

News Flashes

Celebrating



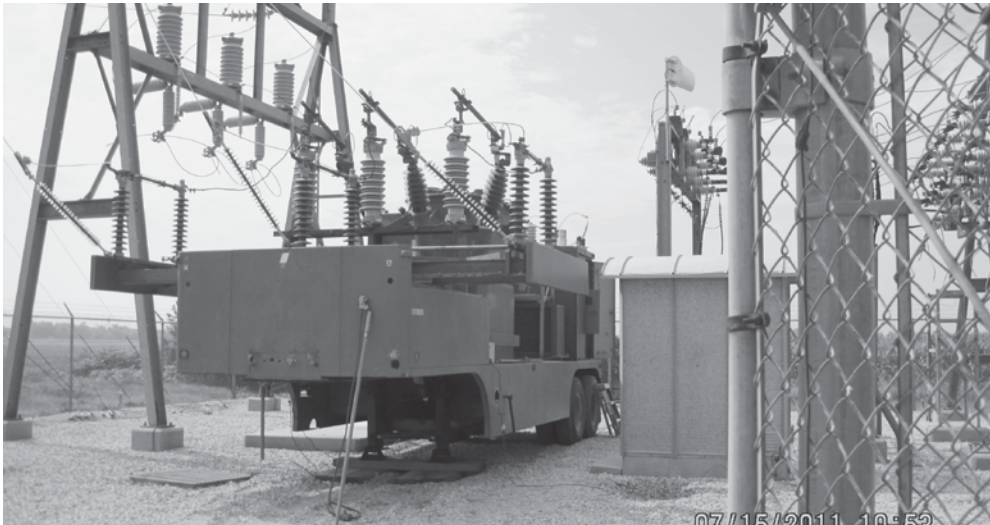
**Harrison County
Rural Electric Cooperative**

Your Touchstone Energy® Partner 

75 Years
1936 - 2011

AUGUST 2011

Portable Sub Station Installed at Clay Site



Harrison County Rural Electric Cooperative crews worked with Northwest Iowa Power Cooperative (NIPCO) crews to install a portable substation owned by NIPCO at the Clay substation site northwest of Modale. Approximately 25 irrigation service requests prompted this installation to activate power for their systems.

Bid Sale



1997 Rice Equipment trailer; 8' x 23'; 18' Flat with 5' Beaver tail; Two non-slip ramps; Two 12,000 lb axles with 12 1/4" x 4" brake shoes replaced in 2004; electric brakes; 235-85R-16 ten-ply radial tires; new leaf springs & suspension in 2008; yellow in color; 10,000 lb drop-leg jack; Pintle hitch (adjustable height)

Offices will be closed
September 5 (Monday) to
observe Labor Day. Outages
and Emergencies should be
reported to 800-822-5591 or
647-2727.
Have a Safe Holiday!



**Energy
Efficiency**

Tip of the Month

One of the easiest ways to make your home more energy efficient is to add insulation in the attic. To see if you need insulation, look across an uncovered attic floor. If the insulation is level with or below the floor joists, you probably need to add more.

Source: Energy Star

Inside this issue:

Summer Arrives	2
2011 Load Forecast	2
Change Air Filters	3
Crew Safety	3
Recipe	3
Irrigation System Safety	4



Summer Arrives

Joe Farley, Manager/EVP

With a struggling economy, extensive flooding conditions, high fuel prices, and rising wholesale power costs what else can burden us?

How about an oppressive heat wave! More of nature's wrath. The recent heat wave will undoubtedly offset the reduced energy consumption experienced during April, May and June.

The summer here at your cooperative has been extraordinarily busy. In early June, contractor crews began work on line strengthening for the FEMA mitigation grant. We are very busy assisting with that effort along with tree trimming in the right-of-way. Our crews have been working long hours to stay ahead of the contractors.

Also in early June the flooding began in the western side of our service area. As many of you know, a multitude of our members in the Modale and Mondamin areas and further west were forced to evacuate their homes and farm ground. We will likely see a reduction in revenue due to these services being de-

energized for much of the month. Our power supplier, NIPCO, also dismantled the "Clay" substation due to the impending flooding. This has been an operational concern in early July as power needs in that area escalated due to heat and irrigation for crops not yet flooded. The effects on our system facilities that were covered with water are yet unknown and problems may persist for months to come once the waters recede.

We have received word that Basin Electric Power Cooperative, our power generation provider is going to implement yet another rate increase in 2011. We are studying the impact of this now.

Oil prices continue to remain high. Although the price has ebbed a bit, it continues to remain an average of \$0.15 per mile higher than in 2010. The average price of fuel per mile for our service fleet is approximately \$0.53. In 2010 that same fuel cost per mile was \$0.38. That is nearly a 40% increase in fuel costs.

We are trying very hard to control costs. Our outside crew has been reduced by two men, thus saving labor costs. We are managing well so far, but much depends on circumstance and we do not want to jeopardize safety or reliability.

Our year-to-date financial results are good, but not robust. The issues mentioned above will continue to impact our operations results

for the remainder of the year.

Cost of Service Study

Your board of directors continues to review the results of our recent Cost of Service Study and rate adjustment recommendations. It is obvious that rates will be adjusted, but the board is yet to determine the extent or the timeline for such an adjustment.

In summary, this summer has yielded a variety of challenges for your cooperative's board and employees. The flooding will likely result in reduced revenues and more expense due to the effort required to mitigate and manage the situation. We will pursue any financial assistance made available to us by the Federal Emergency Management Agency. However, any such assistance does not include lost revenue recovery.

Communications

The cooperative learned a valuable lesson in early June regarding member communication in time of urgency. We found that if at all possible, direct communication works! I greatly appreciate the attendance at our public meeting held on June 8 regarding the flooding. Your cooperative management team is working toward improving our overall communications including utilizing radio and other types of media. We have formed a communications committee and will be doing some work in this regard very soon.

Once again, I appreciate your membership and welcome input from you, our member/owner. Please call the office, drop me a card, or stop by if you have questions or concerns.

Basin Electric Power Cooperative approves 2011 Load Forecast



Directors of Basin Electric Power Cooperative approved the 2011 load forecast at their June meeting.

Basin Electric provides 80 percent of the power to Northwest Iowa Power Cooperative, the wholesale power provider for Harrison County Rural Electric Cooperative.

This forecast is a planning tool used to define the cooperative's generation and transmission needs for the membership.

The 2011 load forecast shows a tremendous amount of growth over the entire Basin Electric membership territory. Growth primarily is in the oil sector, however all other members are growing. The megawatt growth for the forecasted period of 2011-2025 is approximately 1850 megawatts.

The 2011 forecast is similar to the 2009 load forecast, though growth patterns in the energy sector have shifted from coal-bed methane in Wyoming to oil development in eastern Montana and western North Dakota.

Basin Electric's load forecast is completed every two years as required by the Rural Utilities Service.

NOTHING COMPARES
to the Iowa State Fair
August 11 - 21, 2011.

NOTHING COMPARES
to the satisfaction of ownership
of your local electric cooperative – the place
for innovation, accountability, integrity and
commitment to community.

Touchstone Energy®
Cooperatives of Iowa
sponsoring the 4-H Exhibits Building

IowaStateFair
OFFICIAL SPONSOR

Change Air Filters to Save Money and Energy



It's hot this summer. That means your air conditioning system is working hard to keep you comfortable.

Change your air filter regularly. It's simple and only takes a couple of minutes to change the air filter in your heating/cooling system. As TogetherWeSave.com has shown, changing your filter every month can save you \$82 per year.

That's not all you save. A dirty air filter makes your system work harder to keep you cool, wasting energy. Changing your air filter regularly helps ensure efficient operation, keeping your electric bill in check. A dirty air filter also allows dust and dirt to build up in your system. Changing your air filter regularly can reduce the need for costly maintenance, preventing damage to your system.

When winter arrives, it's just as important to change your air filter regularly. Your

heating system needs to work as efficiently as possible to keep you warm, and a clean air filter helps.

Experts recommend turning your system off before changing the air filter. Make sure the arrow on the filter indicating the direction of the airflow is pointing toward the blower motor. When you've made the change, turn your system back on. To save time, it's a good idea to keep a couple of spare filters on hand.

For other tips on how to save energy and money visit www.energysavers.gov or Touchstone Energy® Cooperatives energy-saving website, www.TogetherWeSave.com, or call the efficiency team at Harrison County Rural Electric Cooperative at 647-2727 or 800-822-5591.

Picnic Potato Salad

- | | |
|-------------------------------------|--------------------------------------|
| 2 lbs. new small red potatoes | 1 minced shallot or green onion |
| ¾ c. extra virgin olive oil | 3 finely minced cloves garlic |
| 3 tbsp. red wine vinegar (see note) | ¼ tsp. each minced basil and oregano |
| ¼ c. sliced red onion | Salt and pepper to taste |

Scrub potatoes, removing any eyes and green areas; add 1 tsp. salt to medium saucepan of boiling water; gently lower potatoes into water and cook until fork tender. Rinse the potatoes under cold water; cut into quarters and return to hot pan. Add the olive oil and remaining ingredients to the potatoes. Cook and stir one minute over medium heat; set aside to cool.

Serve this salad warm or cool. It is a potato salad great for these long hot summer days because there is no mayonnaise or salad dressing.

Note: 1 tbsp. of balsamic vinegar and 2 tbsp. red wine vinegar may be substituted for 3 tbsp. wine vinegar for a piquant blend. Add the garlic to the vinegar and let it set for 30 mins. before preparation to help take the "edge" off.



Promoting Safety for Our Crews

During this time of extraordinary work for flooding, and heavy construction, please be courteous to ALL workers forced to work on or near roads. Our employees must concentrate on traffic in these situations as well as their already demanding work. Please show respect by being extra careful in work zones - be aware of people working, their equipment and your general travel. Please avoid distractions from cell phones or others in your vehicle. We appreciate your help in keeping work zones safe!



Interested in Budget Billing –

Your account will be averaged for your last year of usage. That amount is what you would pay each month over the next 12 months. In May and November your account will be reviewed to insure your monthly payments are keeping up with your actual usage. Call our office 800-822-5591 or 647-2727 to get set up.

Swap Column

Wanted: Wood burning heating stove for home; prefer Ashley brand in good condition; Call 712-743-2381

Stay Safe when using Irrigation Equipment

Irrigation electrical hazards are a growing problem in many regions of the country. In the summer heat and dry season, farm irrigation can be vital. However, it is equally vital that operators know and follow proper safety precautions to avoid deadly electrical accidents when operating and handling watering systems.

Farm operators should be aware that metal and water are conductors of electricity while working around irrigation equipment. Aluminum irrigation pipes are lightweight and easier to handle, but are also excellent conductors of electricity. It's best to avoid moving irrigation pipe and equipment on windy days. Sudden gusts of wind could lift pipes into overhead power lines, which could be fatal or cause serious injury to a person holding the pipe.

Water and electricity are a dangerous mix. Electricity always follows the shortest path

to the ground and can flow through conductive materials, such as water or metal. Do not allow irrigation water nozzles to spray power lines. A water stream hitting a power line could energize the entire system, creating a shock hazard to anyone nearby or in contact with the equipment.

The following are good safety tips to avoid possible fatal or serious electrical contact injuries:

- Take time to survey your surroundings before moving equipment. Look up and around you, noting power lines that could be close enough to come in contact with equipment and Stay Away.
- Make sure irrigation system wiring is properly grounded. Have a qualified electrician check the pump and wiring before use at each irrigation season.
- Store unused irrigation pipes far away from power lines or electrical equipment.
- Position irrigation pipes a minimum of 15 feet from power lines.
- Position water jet streams a safe distance to avoid any chance of spraying onto power lines. If the lines are sprayed, the entire system could be energized, creating a danger to anyone nearby.
- Stay away from the piping during lightning activity. Install lightning arresters to pro-

tect your equipment.

- If fuses continually blow or circuit breakers repeatedly trip, have a professional check the wiring. It could avoid a potential electrical hazard.
- Always shut off and lock the master electrical control switch before servicing the machine.
- Avoid moving irrigation equipment on windy days when pipes could be blown into nearby power lines. Keep pipes horizontal to the ground, avoiding contact with power lines.
- If an irrigation pipe does come in contact with a power line, never try to remove it yourself. Stay Away and Call Your Local Electric Utility for HELP!

Contact information would be Harrison County Rural Electric Cooperative 800-822-5591 or 647-2727. Safety is our #1 Priority!



News Flashes

Published monthly by

**Harrison County Rural
Electric Cooperative
61 Fourth Street
PO Box 2
Woodbine, Iowa 51579**

Phone: 712-647-2727
800-822-5591

Fax: 712-647-2906
harrisoninfo@hcrec.coop
www.hcrec.coop

OFFICE HOURS

7:30 a.m. - 4:00 p.m.
Monday through Friday

Joe Farley, Manager/EVP
Jackie Androy, Editor

Directors

John Burbridge
Tim Sproul
Dave Dickinson
Marvin Klein
Jim Rains
Jake Heim
Russ Kurth
Jim Sharp
Norlyn Taylor

Members helping Members

Rural Electric Cooperatives have always extended a helping hand to those needing it. Now, in response to actions by the Iowa General Assembly, the REC has established RECare, a program of members helping members. RECare will provide funds to be distributed by local community action agencies to help pay winter heating bills and to assist in weatherization of homes of low-income consumers.

You may make a one-time contribution or you may make a monthly pledge that will be automatically added to your monthly electric bill. You may also make your contribution part of a matching fund, if there is one established. Even a dollar a month pledge will help others.

Consumer Authorization Form

Yes! I want to be a part of members helping members and contribute to RECare.

_____ I will make a one-time contribution to RECare. My check is enclosed.

_____ I will contribute \$_____ per month to RECare.

I understand this amount will be added to my monthly electric bill.

Name: _____

Address: _____

City: _____ State: _____ Zip: _____

Account Number: _____

Mail to: **RECare**
Harrison County Rural Electric Cooperative
P.O. Box 2
Woodbine, IA 51579-0002