

# News Flashes

# Celebrating



**Harrison County  
Rural Electric Cooperative**

Your Touchstone Energy® Partner 

# 75 Years 1936 - 2011

MAY 2011

## Record Crowd at Harrison County REC Annual Meeting –

### Celebrating 75 Years – “Over the Lines Together”



More than 800 cooperative members filled the headquarters/warehouse on Monday April 4, 2011 for Harrison County Rural Electric Cooperative’s (REC) Annual meeting. The weather cooperated and everyone relaxed and enjoyed fellowship with family, friends, neighbors, and the pleasure of meeting new members. It was great to see so many young faces in the crowd with their families. It’s important to know that our young members are playing a part in their cooperative as well as those members of many years.

There was plenty of Staley’s chicken served; lots of good prizes; the clowns were very busy tying balloons; and Mike Riedman of Basin Electric Power Cooperative was on his Segway and presented a great deal of good information to interested members. Nurses from Harrison County Public Health and Alegent Community Memorial were pleased with people visiting their tables as well. The house was really packed and everyone appeared to be having a good evening.

Cooperative Attorney, Dennis Puckett of Sullivan & Ward, P.C. in Des Moines was present to oversee the business meeting and director election. Inspectors of election certified Jim Sharp (Dist. 5), Russell Kurth (Dist. 6), and Jake Heim (Dist. 7) were elected to serve three-year terms. Congratulations gentlemen on your success in the director election.

Coloring contest winners were announced and emphasis was placed on safety around electricity. Contest entries were displayed on the walls of the cooperative headquarters for members to admire. Safety is the cooperative’s No. 1 priority for employees, members, and the general public.



Congratulations also to our meeting prize winners this year. A \$50 energy bill credit went to one mail-in voter; four \$50 energy bill credits went to members present donated by the cooperative engineering firm of Stanley Consultants; a \$100 energy bill credit went to a member in attendance; and 20 more \$25 energy bill credits went to attending members drawn from our game box. The featured prize this year was a 37-inch



**Harrison County Rural Electric Cooperative will be closed on Monday, May 30th to observe Memorial Day.**



**METERS WILL BE READ!**  
May 27, 28, & 31

**May is National Electric Safety Month. Think Safety First!**

**Inside this issue:**

|                     |   |
|---------------------|---|
| Coloring Contest    | 2 |
| Construction Begins | 2 |
| Safety First        | 3 |
| Advertising         | 3 |
| Swap Column         | 3 |
| Pull the Plug       | 4 |

*continued on page 2*

# Record Crowd at Harrison County REC Annual Meeting

*continued from page 1*

high-definition flat-screen TV won by Joan Androy.

Harrison County REC sends a very special thank you to Pastor Carla Johnson, Boy Scouts representing Troop 51, and Director David Dickinson for being part of the program by singing our national anthem. It takes many people in our service communities to make the cooperative's annual event such a success.

Through each year Harrison County REC strives to serve its members and communities with integrity, innovation, accountability, and commitment to community. We are proud to be a part of the Touchstone Energy cooperative group in 46 states providing power to over 22,000,000 members large and small.

# Coloring Contest Winners

Congratulations to our winners and thank you to everyone participating for making this a successful program. Each year the judging is very difficult because you do such a great job.

Contest Prize winners are listed below:

Age 3-5:

- 1st – Nicole Hoefler
- 2nd – Kiera Hochstein
- 3rd – Clara Boeker

Age 6-8

- 1st – Brylee Sherer
- 2nd – Kylie Alfors
- 3rd – Jackson Thomsen

Age 9-12

- 1st – Ashley Sonderman
- 2nd – Jaxson Alfors
- 3rd – Sara Smith



*Nicole Hoefler*



*Brylee Sherer*



*Ashley Sonderman*

# Construction Activity to Begin Soon!



We are very pleased to announce that the Cooperative has awarded the first of three construction contracts for the FEMA line strengthening and reconditioning work. Bid proposals were received from twelve contracting firms with the low bidder being Custom Powerline Construction of Woodward, Oklahoma. Construction will begin very soon on approximately 63.87 miles of single-phase overhead line and 14 miles of three-phase overhead line. The construction contractor plans to start around May 23,

2011. The first project location scheduled for work is about two miles east of Woodbine, south of F-32 along county road right of way in the Sawyer Trail vicinity. Also included will be line in the Quincy Trail area and a short stretch along 225th Street near the junction of Highways 44 and 30.

Contractors then will move to the area north of Willow Lake and then to an area east and north of Portsmouth. Following completion of these projects, work will be performed along Easton Trail in Allen Township. The final area for this contract will be in the Dutch Four-Corner area to the north and south.

This entire contract will require about ten months for completion. We are asking that members please be prepared for the possibility of some short-term outages in these areas throughout the summer months. The contractors will be

given information and briefings on expectations we have of them regarding the communications and relationships with our members. There will be occasional challenges and those members in the affected areas may experience some brief inconvenience, but we are working very hard to minimize those inconveniences.

Members should be aware that there may be unfamiliar utility trucks and workers in these areas throughout the summer who will be working longer hours. This is all for the betterment of your distribution system.

If at any time you feel a need to question the activity of these crews or you have any concerns, please contact our office at 800-822-5591 or 647-2727. We will review the matter and do all we can to mitigate your inconvenience. When complete, this work is going to provide a much stronger, more reliable system with reduced maintenance costs as a bonus!

Thank you.

Joe Farley, Manager

David Stevens, Director of Operations

# Safety First - Avoid electrical hazards on the farm

We know that farming is very hard and dangerous work. Every year, farmers are electrocuted when farm machinery makes contact with overhead power lines. Please read the following suggestions and apply them daily to stay safe this year during farming season:



- Look over work areas carefully for overhead power lines and utility poles.
- Be sure you have ample clearance when moving large machinery (combines, grain augers, pickers, balers, front-end loaders, etc.) This should be done annually as your equipment and soil conditions cause change.
- Be especially careful when working around trees and/or brush; they may be hiding or overgrown into power lines.
- Properly train farmhands to watch for power lines at all times.
- Store large equipment properly if near or under power lines. When planning new construction, factor in any existing power lines.

Source: *Safe Electricity; Nat'l Ag Safety Database*

## Why Does Your Cooperative Advertise?

Your Cooperative (Harrison County REC) advertises for four major reasons: safety awareness, energy-efficiency awareness, legal liability compliance and federal and state regulatory mandates.

1. Safety awareness – First and foremost is the general public and member-owner's personal safety. While electricity provides many benefits, comforts and security, electricity can be dangerous in certain situations. Your Cooperative's safety messages, such as "Look Up and Live" attempts to remind the public to not take electricity for granted. Safety First, Always!
2. Energy efficiency awareness – For 25 years, your Cooperative has encouraged the efficient use of electricity through educational messages by providing information on the newest, cost effective energy efficient technologies available. Your Cooperative's energy-efficient messages and programs encourage member-owners to choose the most energy-efficient options in both the home and workplace.
3. Legal liability compliance – Legal liability, and, in particular, the affects of improperly grounded or installed electric equipment can create the phenomenon known as "stray voltage". While this issue is associated with public safety, confined animals, and in particular, dairy cows can be adversely affected by this problem if care and attention is not exercised by the animal's owners. Public awareness and education are part of your Cooperative's key strategic goals and our responsibilities as a member-owned utility.
4. Federal and state mandates – Federal and State mandates require electric utilities to advertise and promote certain programs which are for the public's benefit. Grain bin clearance awareness, peak alert announcements and the voluntary customer energy assistance contribution program known as the RECare program are just a few examples of government mandates.

While your Cooperative operates as cost effectively and efficiently as possible, advertising to meet these four important requirements is necessary and appropriate.

## BUDGET BILLING

Budget accounts are recalculated in June and December. If you have a question about your bill, please contact our office.

A message telling customers their new budget amount will print on the bills mailed in May and November.

## Swap Column

**FOR SALE:** Used electric/manual hospital bed; Call 712-674-3324

**FOR SALE:** Old farm scales used in the 20's-30's; \$100; Call 712-643-5632 or 712-269-6323

**FOR SALE:** 2001 GE Dryer, works like new \$25; 2001 GE top-load washer, needs new valve – free; Call 712-647-3015

**WANTED:** Rototiller; Rear or Front tine acceptable; Need not run; Call 712-647-2635



## Energy Efficiency

### Tip of the Month

Electronics account for 8.1 percent of your home's energy use. Cut costs by plugging items into a power strip, and turning that strip off when not in use. "Smart" power strips are a good option – when one master device such as the television is off, it cuts power to other selected items (DVD players, gaming consoles, stereos, etc.)

Source: U.S. Department of Energy

# OVERSTOCK SALE

## MECO ELECTRIC GRILLS

- ▶ ASSEMBLY REQUIRED
- ▶ LIMITED SUPPLY AT DISCOUNTED PRICES

Contact Randy Coyle

Member Service Director

712-647-2727 or stop in the office and see the display



Harrison County REC

Your Touchstone Energy® Partner

MODEL 9325  
WAS \$177.35  
NOW ON SALE  
**\$145.05** + TAX



MODEL 9350  
WAS \$210.46  
NOW ON SALE  
**\$171.47** + TAX

## NOTICE PLEASE –

April title incorrect and should have read: 2011 Scholarship Winner Announced

## News Flashes

Published monthly by

Harrison County Rural Electric Cooperative  
61 Fourth Street  
PO Box 2  
Woodbine, Iowa 51579

Phone: 712-647-2727  
800-822-5591

Fax: 712-647-2906  
harrisoninfo@hcrec.coop  
www.hcrec.coop

OFFICE HOURS  
7:30 a.m. - 4:00 p.m.  
Monday through Friday

Joe Farley, Manager/EVP  
Jackie Androy, Editor

### Directors

John Burbridge  
Tim Sproul  
Dave Dickinson  
Marvin Klein  
Jim Rains  
Jake Heim  
Russ Kurth  
Jim Sharp  
Norlyn Taylor

## ‘Pull the Plug’ on old, inefficient appliances –

Iowa RECs partnered with Environmental Services of Iowa (ESI) in 2010 with the Pull the Plug program. This program rewards cooperative members by providing instant rebates for pulling the plug on high energy use appliances.

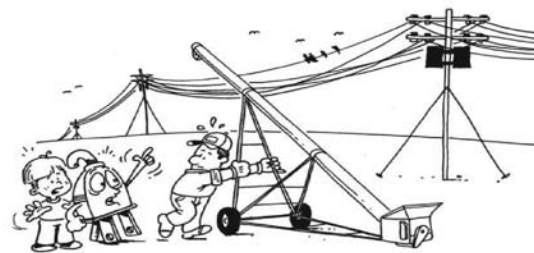
To participate in the Pull the Plug program, co-op members should call Randy Coyle at Harrison County REC, 647-2727 or 800-822-5591 advising him that you have an old operating refrigerator, freezer, or window air conditioner that you’d like picked up by ESI.

Randy verifies the member information, gets a daytime phone number and then electronically sends collection information to ESI, as the cooperative recycling contractor. ESI will then contact you, the member, to confirm the request and provide an estimated collection time – within a three-week time frame.

Your old appliance to be picked up must be located curbside or be easy outside accessible for pick up. This means it must be outside of the home and also must be a working unit. It is very important that you are aware in advance that Environmental Services of Iowa pick up employees will not enter our member’s homes to remove any old appliances.

During appliance pick up, ESI will check to be sure the appliance is operable, load it, and write a \$25 rebate check. Three appliances per year may be recycled per residence. ESI will remove other appliances for our cooperative members at the member’s expense.

## GET THE WORD OUT ABOUT ELECTRICAL SAFETY



- Look up, look down and look out!
- Be careful of overhead and buried power lines and residential electrical equipment.
- Farmers – Be conscious of what’s overhead – power lines to be specific. Make certain your equipment can pass safely underneath, including any new machinery you have purchased.



Harrison County Rural Electric Cooperative  
Your Touchstone Energy® Partner

*Iowa’s electric cooperatives want you to have a safe and productive spring!*



**Your local co-op puts safety first!**