



**Harrison County
Rural Electric Cooperative**

Your Touchstone Energy® Partner



Energy Trail Tours of 2010

Formerly Oahe/Basin Tours

Several members of Harrison County Rural Electric Cooperative (REC) tracked their electric power right to its source this summer.

They participated in three-day educational power supply tours sponsored by Harrison County REC and NIPCO, the cooperative's power supplier. In addition to the educational portion of the tour members enjoy good food, fun, and fellowship.

At the Oahe Power House near Pierre, S.D., participants had the opportunity to try their skill at controlling the Missouri River during adverse weather conditions. The interactive display shows the many considerations the U.S. Army Corps of Engineers takes when operating the dams.

On the second day of the tour in west-central North Dakota, the members were amazed at the number of products made from lignite coal at the Great Plains Synfuels plant and Antelope Valley Station. Electric power and natural gas are the principle products, but there are also many other chemicals, fertilizers and adhesives, as well as CO₂ which is piped to Canada and used for oil recovery.

Another highlight of the tour was a visit to the adjoining coal mine. Seeing some of the largest equipment in the United States in operation is spectacular. The members were pleased to know there is enough coal for generations to come and to see the successful re-

sults of reclamation of the land after mining is complete. The land is carefully returned to either natural prairie or cropland depending on its original use. Some tour members caught a glimpse of the antelope that graze on the reclaimed acres.

In addition to the tours the members get a brief look at electric cooperative history, and gain new understanding and pride in their ownership of the cooperative. The tours are part of the cooperatives' commitment to provide education for directors, employees, and member-owners.

If you would like to be a part of this experience next year watch this newsletter in the spring for the opportunity to enter the drawing.



Tour 1: Allen & Beverly Bruck of Panama; Sandra & William Wadsworth of Dunlap



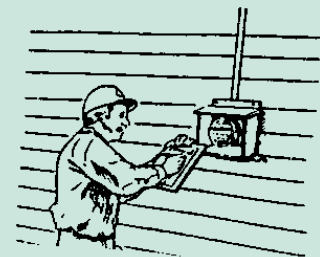
Tour 2: William & Judith Weakly of Logan; Marian & Joseph Wellman of Neola



Tour 3: Lois Surber & Shanell Dickman of Woodbine; Diane & Sam Jacobs of Woodbine

METERS WILL BE READ!

Harrison County Rural Electric Cooperative will read meters September 28, 29, and 30



**Energy
Efficiency**

Tip of the Month

Use the moisture sensor feature on your clothes dryer. It will shut down the dryer when clothes are dry. Also, clean the lint filter after each load. This improves air circulation and increases the dryer's efficiency.

Inside this issue:

Smart Landscaping	2
Harvest Safety	2
Cable Failure	3
LIHEAP	3
Appliance Recycling	3
Golf Fundraiser	4
RECare Program	4

Swap Column

For Sale – John Deere two-bag bagger for 42” or 48” deck mower; used very little; asking \$150; Call 647-2065 after 5 p.m.

Smart landscaping can lower your energy bill

The trees, shrubs, and bushes you plant might help lower your energy bill – if you plant them in the right place.

Though most people plant just for beauty, careful planning can help protect a house from the summer’s hot sun.

Trees not only shade the house, but they can reduce surrounding air temperatures by up to nine degrees, according to the Department of Energy, and air underneath trees can be 25 degrees cooler than the area above blacktop.

Plant deciduous trees that will grow high, spreading branches on the south side of your home. These trees will cast a generous amount of shade in the summer, and let solar heat filter through on mild winter days. To the west, plant trees with lower crowns to block afternoon sun.

Deciduous trees of six to eight feet can begin to shade the home the first year, though five to 10 years will pass before they’re tall enough to shade the roof. Use shrubs, vines and groundcover to line walkways and windows for additional cooling.

By keeping energy efficiency in mind when you add landscaping, you can have a beautiful yard and a lower energy bill year-round.



Know the Dangers of Large Equipment as Harvest Begins

As farmers begin this season’s harvest, it’s important to remember some important safety steps. The rush to harvest can reap grim results if steps to ensure safety are bypassed. Each year, across the U.S., hundreds of farm workers are injured and many are killed when their farming equipment makes contact with power lines. Power lines must be avoided – and taking that extra step – can ensure you continue to have a safe and productive harvest.

Today’s farming operations often involve large and complex machinery. Large combines, raised dump beds, oversized wagons, grain augers, planters, spraying equipment and metal irrigation pipes are all excellent conductors of electricity. Equipment contacting overhead power lines is the leading cause of farm electrocution accidents in the Midwest. Everyone working on a farm should be aware of power lines and keep farm equipment away from the lines. It’s also important to evaluate new or used equipment that is being used for the first time on your property. Take special note of larger, modern equipment such as tractors and combines with higher antennas that may create a clearance threat.

Moving portable grain augers continues to pose one of the greatest threats to workers. Those who are moving the equipment on the ground can provide a direct path for electricity if there is contact with overhead wires. Always lower grain augers before moving them. Things like wind, uneven ground, shifting weight and other conditions can create an unexpected result. Use a spotter to help make certain that contact is not made with power

lines when moving large equipment. Areas near grain bins pose a dangerous threat if equipment is too large or is used improperly. If you’re installing new grain bins, contact a licensed electrician or a Harrison County Rural Electric Cooperative representative to help place electrical service lines.

If the equipment you are in makes contact with power lines be sure you:

- Stay in the cab and call for help
- If there is imminent risk of fire, jump clear of the vehicle and land with both feet on

the ground at the same time – do not allow any part of your body to touch the equipment and ground at the same time.

If you question the height of power lines near your working areas,

don’t attempt to measure the line heights yourself. Contact Harrison County Rural Electric Cooperative to help determine line height in each area of the farm.

The best way to handle a farm-related accident is prevention. Respect electricity and avoid contact with overhead lines. Look up, look down and be safe this harvest season!

Overhead power lines aren’t the only risk during harvest season. Pole guy wires are grounded and a supporting part of the pole or structure. If one is broken it can cause an electric current disruption and electric hazard or even cause the pole to break. If you hit a guy wire and break it, call Harrison County Rural Electric Cooperative, 647-2727 or 800-822-5591, immediately. Do not attempt to fix it yourself.

UNDERGROUND CABLE FAILURE – CASS SUBSTATION

By Dave Stevens, Director of Operations

Harrison County Rural Electric Cooperative members may be experiencing outages and blinks on the Cass Substation circuits (ALL 6000 ACCOUNT NUMBERS); parts of the following areas (northeast and southeast of Woodbine) and (west of Panama and Portsmouth); North, South, and along Highway 44. Approximately 2000 feet of primary underground cable extending from the Cass substation to highway 44 has started to fail, all at once without warning. This cable is thirty years old and must be replaced as soon as possible. Our plan is to locate and purchase new cable and have it delivered by August 27th. We will start plowing the week of August 30th. Please be patient! We will get this failing cable replaced as soon as possible. Thank you.

2010-2011 IOWA HOME ENERGY ASSISTANCE PROGRAM

ATTENTION: RESIDENTIAL CUSTOMERS NEED HELP WITH YOUR HEATING BILL?

The 2010-2011 Low-Income Home Energy Assistance Program (LIHEAP) has been established to help qualifying low-income Iowa home owners and renters pay for a portion of their primary heating costs for the winter heating season.

The assistance is based on household income, household size, type of fuel, and type of housing.

If you are not sure where to apply, please write to:

LIHEAP

Iowa Department of Human Rights

Capitol Complex

Des Moines, IA 50319

or, call your local community action agency.

INCOME MAXIMUMS

Household Size	Three-Month Gross Income	Annual Gross Income
1	\$ 4,061	\$ 16,245
2	\$ 5,464	\$ 21,855
3	\$ 6,866	\$ 27,465
4	\$ 8,269	\$ 33,075
5	\$ 9,671	\$ 38,685
6	\$11,074	\$ 44,295

For households with more than six members, add \$1,403 per three months, or \$5,610 annually for each additional member.

2010-2011 IOWA HOME ENERGY ASSISTANCE PROGRAM

WHEN TO APPLY:

- Elderly (60 & over) and/or disabled: October 1, 2010 to April 30, 2011
- All other households: November 1, 2010 to April 30, 2011

WHAT TO TAKE:

- Proof of Income (for all household members age 19, and over)
Most recent three months' check stubs, award letter from Social Security or 2009 tax return.
- Social Security numbers for all household members (documentation required)
- Recent heat bill
- Recent electric bill
- Recent telephone bill

WAGE EARNERS:

Attach copies of your check stubs for the three-months preceding the date of application, or a copy of your federal income tax return.

FIXED INCOME:

This income may include: Social Security Benefits, Supplemental Security Income, Family Investment Program, Veteran's Assistance, Unemployment Insurance, & pensions.

Please bring copies of your most recent three months' check stubs.

SELF-EMPLOYED/FARMERS:

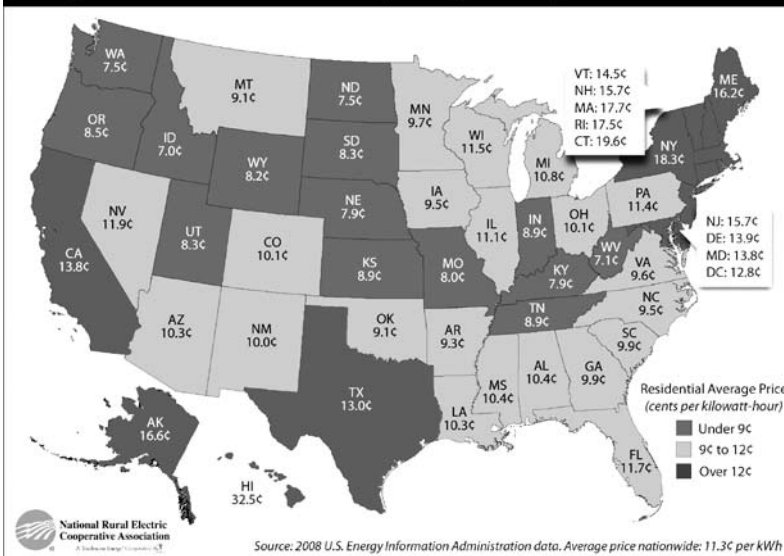
Please bring a copy of your most recent federal income tax

FIP RECIPIENTS:

Please bring your current DHS Notice of Decision or contact your local office for acceptable document information.

If you receive alimony or child support, it will also need to be verified.

Average Prices for Residential Electricity (2008 figures, in cents per kWh)



Source: 2008 U.S. Energy Information Administration data. Average price nationwide: 11.3c per kWh

This map shows the average prices for residential electricity based on 2008 figures, in center per kWh. If climate change is not addressed fairly in Congress, current proposed legislation could mean energy prices for Iowa households would increase as much as \$1,500. Source: U.S. Energy Information Administration data.

Appliance Recycling Program on YouTube

Recycling old, inefficient appliances – refrigerators, freezers, and window air conditioners – instead of keeping them plugged in can earn you money and save electricity, too.

Harrison County Rural Electric Cooperative, along with its power supplier NIPCO, is sponsoring a recycling program which pays \$25 each for up to three old, working appliances, which are then demanufactured. Hazardous materials are properly disposed of and reusable metals and parts recycled.

Call your cooperative, 800-822-5591 or 647-2727, to arrange pickup by a certified recycling company and earn your rebate. See what one western Iowa cooperative member had to say about the recycling program in a one-minute view on YouTube at <http://bit.ly/nipco3>.

Touchstone Energy Golf Event Raises Dollars for Kids' Health Care

Siouxland children will benefit from improved health care services financed by golfers who raised \$34,615 in charity funds during the 11th annual Touchstone Energy Midwest Golf Invitational. The total raised over the history of the tournament is more than \$308,000.

Harrison County Rural Electric Cooperative, along with Northwest Iowa Power Cooperative (NIPCO), headquartered in LeMars, Iowa, its member cooperatives, and other electric cooperatives in northwest Iowa, coordinated the July 19 event at the Dakota Dunes Country Club. The event was attended by approximately 90 people from five states.

Funds raised will go to the kids' health care charity, St. Luke's Children's Miracle Network. Through this event, the eight Northwest Iowa rural electric cooperatives – all affiliated with Touchstone Energy – partnered with 27 local, regional, and national businesses and organizations to show their commitment to community by raising money for a regional charity. St. Luke's Children's Miracle Network has received a total of \$296,990 since the event began. The total raised for charities, including Children's Miracle Network, over the event's 11-year history is \$308,490.

NIPCO is a wholesale electric generation and transmission cooperative owned by six rural electric cooperatives and a full-service municipal electric cooperative serving six western Iowa towns. Those cooperatives are Harrison County REC, Iowa Lakes Electric Cooperative, Nishnabotna Valley REC, North West REC, Western Iowa Municipal Electric Cooperative Association, Western

Iowa Power Cooperative, and Woodbury County REC. Lyon Rural Electric Cooperative of Rock Rapids also is a tournament sponsor.

All of the above cooperatives are members of Touchstone Energy, a national alliance of local, consumer-owned electric cooperatives providing high standards of service to customers large and small. There are more than 705 Touchstone Energy cooperatives in 46 states delivering energy and energy solutions to more than 40 million customers every day. Touchstone Energy cooperatives serve their members with integrity, accountability, innovation, and a long-standing commitment to communities.

Children's Miracle Network is a non-profit organization dedicated to saving and improving the lives of children by raising

funds for 170 affiliate hospitals serving children throughout the United States. Since it began in 1989, St. Luke's Children's Miracle Network has raised more than \$5.3 million for children's healthcare in Siouxland. All gifts to St. Luke's Children's Miracle Network stay local and are used to purchase new equipment and supplies as well as support programs and services designed specifically for children and their families.



RECare Program Information

By Lori Barry, Director of Finance/Administration

For the 2010 period, Harrison County Rural Electric Cooperative members contributed \$1,189.00, a decrease of \$408.01 from last year, but still a wonderful helping hand to needy households! There was an average of 20 contributors to the fund compared to an average of 21 last year. The program will provide heat assistance to ten families averaging \$118.90 per household. Thank you for helping make a difference! If you're interested in making a one-time contribution, or a monthly amount, please call the cooperative office for details or complete the form below and return it to our office.

Members helping Members

Rural Electric Cooperatives have always extended a helping hand to those needing it. Now, in response to actions by the Iowa General Assembly, the REC has established RECare, a program of members helping members. RECare will provide funds to be distributed by local community action agencies to help pay winter heating bills and to assist in weatherization of homes of low-income consumers.

You may make a one-time contribution or you may make a monthly pledge that will be automatically added to your monthly electric bill. You may also make your contribution part of a matching fund, if there is one established. Even a dollar a month pledge will help others.

Consumer Authorization Form

Yes! I want to be a part of members helping members and contribute to RECare.

_____ I will make a one-time contribution to RECare. My check is enclosed.

_____ I will contribute \$_____ per month to RECare.

I understand this amount will be added to my monthly electric bill.

Name: _____

Address: _____

City: _____ State: _____ Zip: _____

Account Number: _____

Mail to: RECare

Harrison County Rural Electric Cooperative

P.O. Box 2

Woodbine, IA 51579-0002

News Flashes

Published monthly by

**Harrison County Rural
Electric Cooperative**
61 Fourth Street
PO Box 2
Woodbine, Iowa 51579

Phone: 712-647-2727
800-822-5591

Fax: 712-647-2906
harrisoninfo@hcrec.coop
www.hcrec.coop

OFFICE HOURS
7:30 a.m. - 4:00 p.m.
Monday through Friday

Joe Farley, Manager/EVP
Jackie Androy, Editor